

I/A CANNULAE coaxial

J2239.30 *Manico ergonomico per cannule I/A* **Ergonomic handle for I/A cannulas**

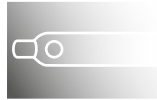


da usare senza lo sleeve in silicone
to be used without the silicone sleeve

★ **BEST SELLER**

J2239.31 ★

I/A cannula, diritta/straight



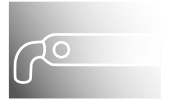
J2239.32 ★

I/A cannula, angolo di 45°/angled 45°



J2239.33

I/A cannula, angolo di 90°/angled 90°



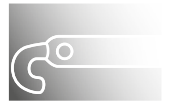
J2239.35

I/A cannula, curva/curved



J2239.34

I/A cannula, punta 150° curva uncino ore 12/tip 150° hook-shaped



I/A CANNULAE coaxial with silicone sleeve

sistema composto da manipo in titanio, tips angolata 45° e sleeve in silicone
system composed by titanium handle, cannula angled 45° and silicone sleeve

J2239.30 *Manico ergonomico per cannule I/A* **Ergonomic handle for I/A cannulas**



J2239.38

Cannula angolata 45°, per incisione MICS da 1.8 mm
da usare con lo sleeve in silicone (J2239.11)

MICS I/A cannula angled 45°, for 1.8 mm incisions
to be used with silicone sleeve (J2239.11)



J2239.11

Sleeve in silicone, confezione 6 pz. non sterile,
da utilizzare con la cannula J2239.38

Silicone Sleeve package 6 pc. non-sterile,
to be used with cannula J2239.38



1.8 mm
incision

J2239.36

Cannula angolata 45°, per incisione MICS da 2.2 mm
da usare con lo sleeve in silicone (J2239.10)

MICS I/A cannula angled 45°, for 2.2 mm incisions
to be used with silicone sleeve (J2239.10)



J2239.10

Sleeve in silicone, confezione 5 pz. non sterile,
da utilizzare con la cannula J2239.36

Silicone Sleeve package 5 pc. non-sterile,
to be used with J2239.36 cannula



2.2 mm
incision

23G I/A bimanual ULTRA THIN CANNULAE

IRRIGATING



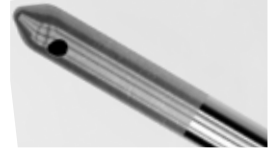
ASPIRATING



J2233.80

Cannula aspirazione 23G, "thin-wall" foro aspirazione 0.35 mm, sabbiata

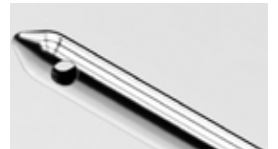
23G aspiration handpiece, "thin-wall", sandblasted, titanium handle, 0.35 mm port



J2233.81

Manipolo per infusione 23G, "thin-wall", fori laterali da 0.4 mm

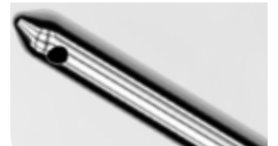
23G infusion handpiece, "thin-wall", titanium handle, two 0.4 mm. Side ports



J2233.8

Cannula aspirazione 23G, "thin-wall", foro aspirazione 0.35 mm, liscia

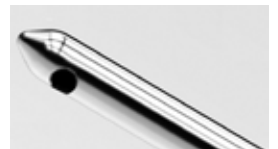
23G aspiration handpiece, "thin-wall", smooth, titanium handle, 0.35 mm port



J2233.82

Manipolo infusione, 23G, "thin-wall", foro inferiore 0.4 mm

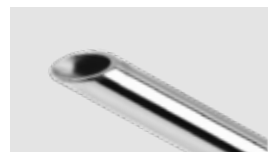
23G infusion handpiece, "thin-wall", titanium handle, 0.4 mm lower port



J2233.83

Manipolo infusione, 23G, "thin-wall", liscio, apertura frontale diagonale

23G infusion handpiece, "thin-wall", front diagonal opening, titanium handle



I/A bimanual ULTRA THIN 23G disposable CANNULAE

5 UNITÀ PER SCATOLA/5 STERILE UNITS



JD96624

Manipolo per infusione 23G, "thin-wall", punta curva, fori laterali da 0.4 mm

23G infusion handpiece, "thin-wall", two 0.4 mm. Sideports



JD96613

Cannula aspirazione 23G, "thin-wall", punta curva, foro aspirazione 0.3 mm, sabbiata

23G aspiration handpiece, "thin-wall", sandblasted, 0.3 mm port (curved)



JD96629

Cannula aspirazione 23G, "thin-wall", punta curva, foro aspirazione 0.3 mm, liscia

23G aspiration handpiece, "thin-wall", 0.3 mm port (curved)



21G I/A bimanual CANNULAE

IRRIGATING

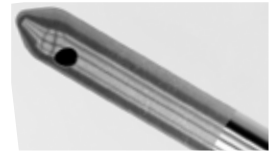


ASPIRATING



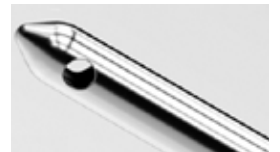
J2233.1

Cannula aspirazione curva da Ø 0.80 mm, punta sabbata, foro superiore Ø 0.35 mm, manico in titanio
Aspirating handpiece, Ø 21G, curved, sandblasted tip, 28G top port, titanium handle



J2233.2

Cannula infusione curva da Ø 0.80 mm, a 2 fori laterali Ø 0.45 mm, manico in titanio
Irrigating handpiece, Ø 21G, curved tip, dual 26G side ports, titanium handle



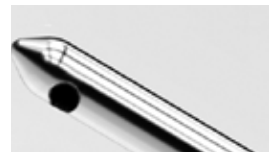
J2233.3

Cannula aspirazione curva da Ø 0.80 mm, punta liscia, foro superiore Ø 0.35 mm, manico in titanio
Aspirating handpiece, Ø 21G, curved tip, 28G top port, titanium handle



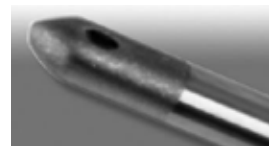
J2233.4

Cannula infusione curva da Ø 0.80 mm, foro inferiore Ø 0.50 mm, manico in titanio
Irrigating handpiece, Ø 21G, curved tip, 25G underside port, titanium handle



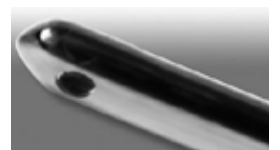
J2233.5

Cannula aspirazione curva, punta **ellittica**, sabbata, foro superiore Ø 0.35 mm, manico in titanio
Aspirating handpiece, curved, **elliptical** section tip, sandblasted tip, 28G top port, titanium handle



J2233.6

Cannula infusione curva, punta ellittica, foro inferiore Ø 0.50 mm, manico in titanio
Irrigating handpiece, curved, elliptical section tip, 25G underside port, titanium handle



J2233.10

Cannula aspirazione, curva da Ø 0.80 mm, foro superiore Ø 0.35 mm, manico in titanio
Aspirating handpiece, Ø 21G, curved tip, 28G top port, titanium handle



J2233.11

Cannula infusione curva da Ø 0.80 mm, apertura in punta flautata da Ø 0.60 mm, manico in titanio
Irrigating handpiece, Ø 21G, curved tip, 23G fluted front opening, titanium handle

